



VILLAGE ESTATES

• EST.1993 •



93 Main Road, Sidcup, Kent DA14 6ND

Tel: 0208 302 1002

www.village-estates.com

Email: sidcup@village-estates.com



EN SUITE TO MASTER BEDROOM

SOUTH EAST REAR GARDEN

SPACIOUS LOUNGE

MODERN KITCHEN WITH INTEGRATED APPLIANCES

DRESSING AREA TO SECOND BEDROOM

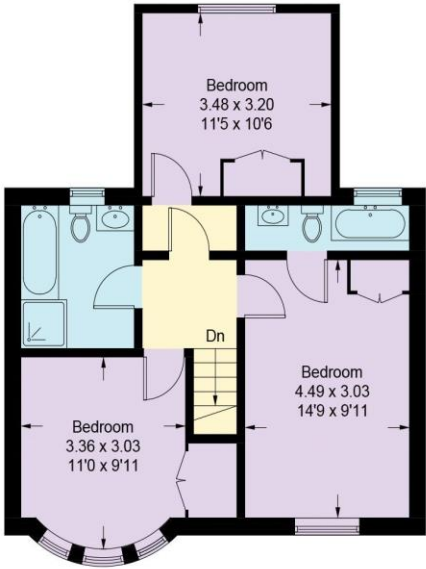
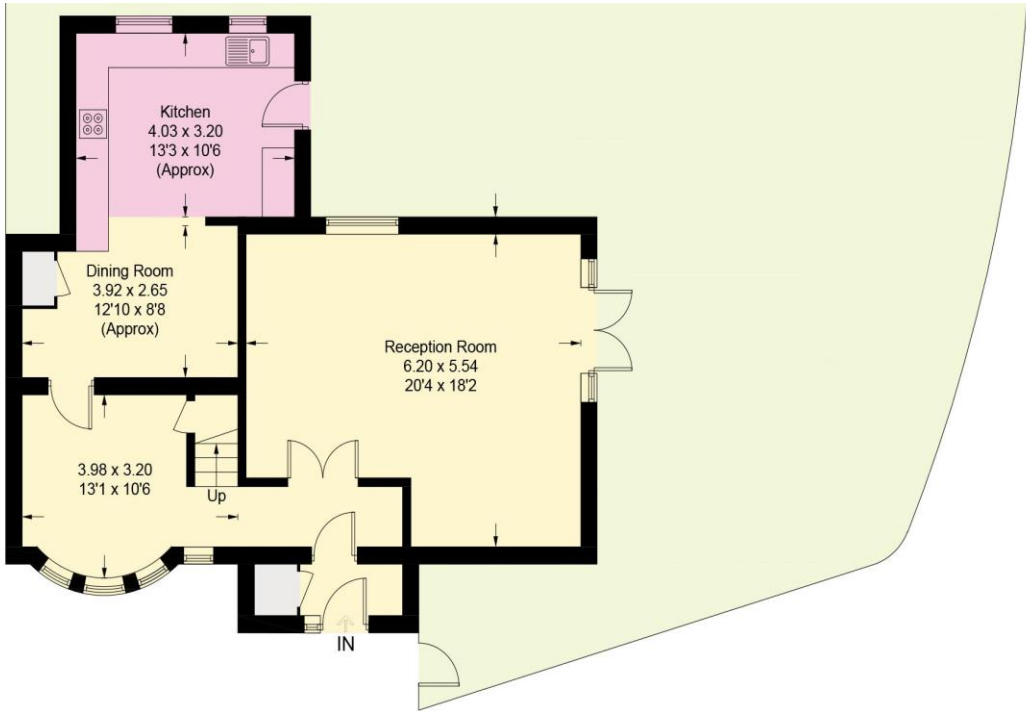
GARAGE WITH REAR ACCESS



26 Maple Crescent
Sidcup, DA15 9LT

Guide Price £625,000-£650,000

Village Estates are pleased to offer for sale a beautifully presented three double bedroom end of terrace house positioned at the end of a PEACEFUL CUL-DE-SAC. Having been a FAMILY HOME for many years the existing owners have EXTENDED and MODERNISED the property over time, tailoring a FANTASTIC LAYOUT that can accommodate a growing family with THREE DOUBLE BEDROOMS. Situated just moments away from all your much needed amenities including several primary and secondary schools.



CURRENT ENERGY EFFICIENCY RATING 'C'

CONSUMER PROTECTION FROM UNFAIR TRADING REGULATIONS 2008

Please note that any services, heating system or appliances have not been tested, and no warranty can be given or implied as to their working order. You are advised to obtain verification from your solicitor or surveyor. References to the tenure of a property are based on information supplied by the seller. We have not had sight of the title documents and a buyer is advised to obtain verification from their solicitor. Items shown in photographs are not included unless specifically mentioned within the sales particulars, but may be available by separate negotiation. Whilst every attempt has been made to ensure the accuracy of the floor plan contained here, measurements of doors, windows, rooms and any other items are approximate and no responsibility is taken for any error, omission, or mis-statement. We advise you to book an appointment to view before embarking on any journey to see a property, and check its availability. The accuracy of these details are not guaranteed and they do not form part of the contract.